

M5 GAPDH(2A8) Mouse Monoclonal Antibody 使用说明书

产品名称	单位	货号
M5 GAPDH(2A8) Mouse mAb	50 μ l	MF087-T
M5 GAPDH(2A8) Mouse mAb	100 μ l	MF087-01

【STORAGE】

Store at -20°C. Stable for one year from the date of shipment.

【BACKGROUND】

Glyceraldehyde-3-phosphate dehydrogenase (GAPDH) catalyzes the phosphorylation of glyceraldehyde-3-phosphate during glycolysis. Though differentially expressed from tissue to tissue, GAPDH is thought to be a constitutively expressed housekeeping protein. For this reason, GAPDH mRNA and protein levels are often measured as controls in experiments quantifying specific changes in expression of other targets. Recent work has elucidated roles for GAPDH in apoptosis, gene expression and nuclear transport. GAPDH may also play a role in neurodegenerative pathologies such as Huntington and Alzheimer's diseases.

【REFERENCES】

- 1.Barber, R.D. et al. 2005. GAPDH as a housekeeping gene: analysis of GAPDH mRNA expression in a panel of 72 human tissues. *Physiol. Genomics* 21,389-95.
2. Hara, M.R. and Snyder, S.H. 2006. Nitric oxide-GAPDH-Siah: a novel cell death cascade. *Cell Mol. Neurobiol.* 26, 527-38.
- 3.Zheng, L. et al. 2003. S phase activation of the histone H2B promoter by OCA-S, a coactivator complex that contains GAPDH as a key component. *Cell* 114, 255-66.
- 4.Bae, B.I. et al. 2006. Mutant huntingtin: nuclear translocation and cytotoxicity mediated by GAPDH. *Proc. Natl. Acad. Sci. USA* 103, 3405-9.
- 5.Wang, Q. et al. 2005. Proteomic analysis of neurofibrillary tangles in Alzheimer disease identifies GAPDH as a detergent-insoluble paired helical filament tau binding protein. *FASEB J.* 19, 869-71.

【SOURCE】

This monoclonal antibody is produced by immunizing animals with a synthetic peptide (KLH-coupled) corresponding to the carboxy terminus of human GAPDH.

【SPECIFICITY】

GAPDH (2A8) Mouse mAb detects endogenous levels of total GAPDH protein.

【REACTIVITY】

Human

【ISOTYPE】

Mouse IgG1

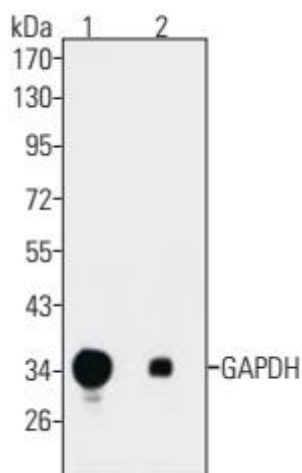
IMPORTANT

Use an anti-mouse secondary antibody to detect the 2A8 antibody.

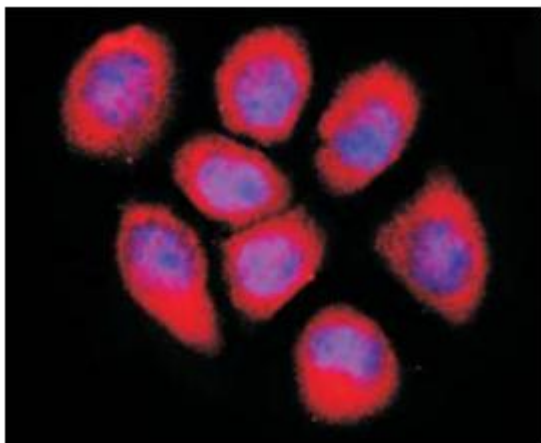
RECOMMENDED ANTIBODY DILUTIONS

Western blotting	1:5000
Immunofluorescence	1:500

For Western blots, incubate membrane with diluted antibody in 5% w/v nonfat dry milk, 1X TBS, 0.05% Tween-20 at 4°C with gentle shaking, overnight.

APPLICATION DATA

Western blot analysis of HeLa cell lysate, using GAPDH (2A8) Mouse mAb. The antibody dilutions are 1:5000 (lane 1) and 1:10000 (lane 2). Each lane was loaded with 10 µg of cell lysate.



IF analysis of HeLa cells using GAPDH (2A8) Mouse mAb at a 1:500 dilution.

【备注】

本产品仅供科研使用。在确认产品质量出现问题时，本公司承诺为客户免费更换等量的质量合格产品。

