

M5 His-Tag (10E2) Mouse Monoclonal Antibody (HRP Conjugated) 使用说明书

产品名称	单位	货号
M5 His-Tag (10E2) Mouse Monoclonal Antibody (HRP Conjugated)	50μl	MF082-HRP-T
M5 His-Tag (10E2) Mouse Monoclonal Antibody (HRP Conjugated)	100μl	MF082-HRP-01

【STORAGE】

Store at -20°C. Stable for one year from the date of shipment..

【BACKGROUND】

Plasmid vectors for the expression of coding regions of eukaryotic genes in bacterial, insect and mammalian hosts are in common usage; such expression vectors are frequently used to encode hybrid fusion proteins consisting of a eukaryotic target protein and a specialized region designed to aid in the purification and visualization of the target protein. A system that has proven to be very successful relies on the insertion of a six histidine (His6) sequence in the N-terminus of the encoded protein, allowing for efficient coupling to Ni²⁺-chelating resins and purification by single step affinity chromatography. This polyhistidine sequence can then be removed by specific cleavage at sites recognized by enzymes such as thrombin or enterokinase, permitting the separation of the target protein from the polyhistidine tag. Visualization of such fusion proteins can be achieved by utilizing antibodies generated against specific peptide sequences downstream from the multiple cloning sites.

【REFERENCES】

1. Maniatis, T., et al. 1982. Molecular Cloning. Cold Spring Laboratory, Cold Spring Harbor, NY.
2. Hochuli, E. 1988. Large-scale chromatography of recombinant proteins. J.Chromatog. 444: 293-302.

【SOURCE】

This monoclonal antibody is produced by immunizing mice with a 6×His synthetic peptide (KLH-coupled).

【SPECIFICITY】

His-Tag (10E2) Mouse mAb (HRP Conjugated) detects over-expressed or recombinant proteins containing the 6× His epitope tag.

【REACTIVITY】

All

【ISOTYPE】

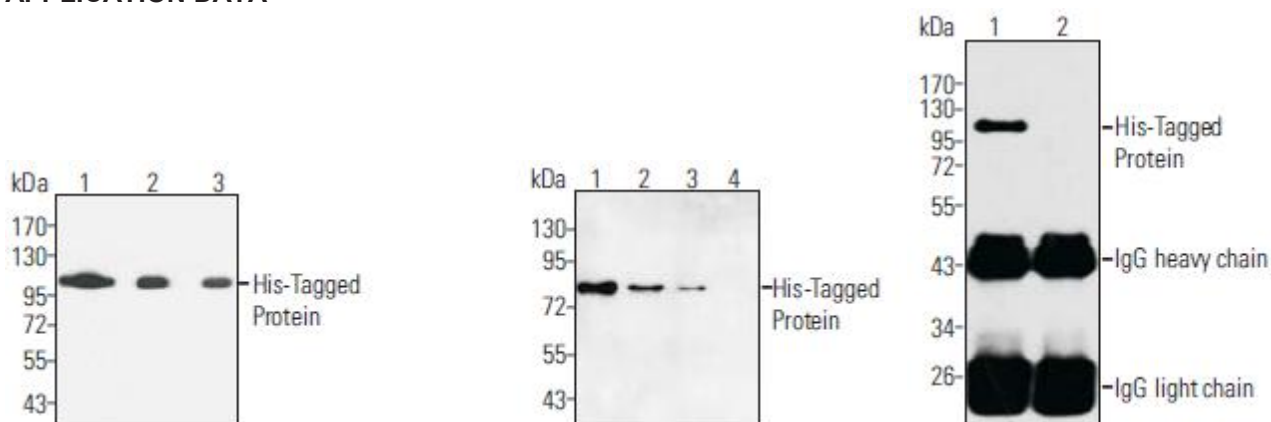
Mouse IgG1

RECOMMENDED ANTIBODY DILUTIONS

Western blotting 1:5000

For Western blots, incubate membrane with diluted antibody in 5% w/v nonfat dry milk, 1XTBS, 0.05% Tween-20 at 4°C with gentle shaking, overnight.

APPLICATION DATA



Western blot analysis of over-expressed His-tagged protein in 293T cell lysate, using His-tag(10E2) Mouse mAb (HRP Conjugated). The antibody dilutions are 1:2000 (lane 1) and 1:5000 (lane 2) and 1:10000 (lane 3). Each lane was loaded with 10 μ g of cell lysate.

10E2 (HRP Conjugated) can specifically detect 1 ng of recombinant protein. There is 6 ng, 3 ng, 1 ng, and 0 ng His-tagged recombinant protein in lanes 1-4, respectively, added with 20 μ g of 293T cell lysate. The 10E2 (HRP Conjugated) antibody dilution is 1:2000.



【备注】

本产品仅供科研使用。在确认产品质量出现问题时，本公司承诺为客户免费更换等量的质量合格产品。

北京市昌平区回龙观龙域北街 10 号院 1 号楼四层 422-1 室（创集合大楼）

热线电话：（86）010-59724293